



Date: 10/04/26
 Time: 19:00
 Match: Round: 20. Matchday, Match ID: 62070748, Season: 25/26
 Venue: Sporthalle am See
 Referees: ,

MATCH-REPORT

HLA Meisterliga

www.hla.at

#GeballteLeidenschaft

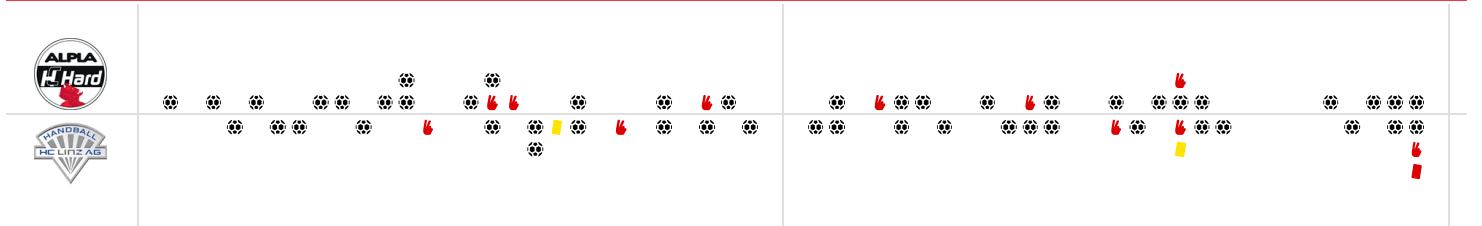
ENDED

Alpla HC Hard

26 : 24

HC Linz AG

(13 : 11)



Top scorer: Tokic **7** | 2min: **6** | Top scorer: Bohm **6** | 2min: **5**

SCORING EFFICIENCY: 65%

Total shots: 40

Goals: 26

Saved: 8

Missed: 6

Post: 2

Blocked: 0

7M EFFICIENCY

100%

2
2

Goals scored
7m awarded

Unsuccessful:

SCORING EFFICIENCY: 60%

Total shots: 40

Goals: 24

Saved: 12

Missed: 3

Post: 2

Blocked: 1

7M EFFICIENCY

20%

1
5

Goals scored
7m awarded

Unsuccessful:

- 13:02 | 3 MOSTL (SAVE)
- 35:36 | 26 FIZULETO (SAVE)
- 52:06 | 13 PETROVIC (SAVE)
- 52:21 | 193 KLIMAVETS (SAVE)

ATTACK SUCCESS **GOALKEEPER EFFICIENCY** **DEFENDING EFFICIENCY**

52%

26 / 50

Goals scored / Attack*

25%

8 / 32

Saves / Shots on target

52%

24 / 50

Goals conceded / Attack conceded*

DEFENDING EFFICIENCY **GOALKEEPER EFFICIENCY** **ATTACK SUCCESS**

48%

26 / 50

Goals conceded / Attack conceded*

32%

12 / 38

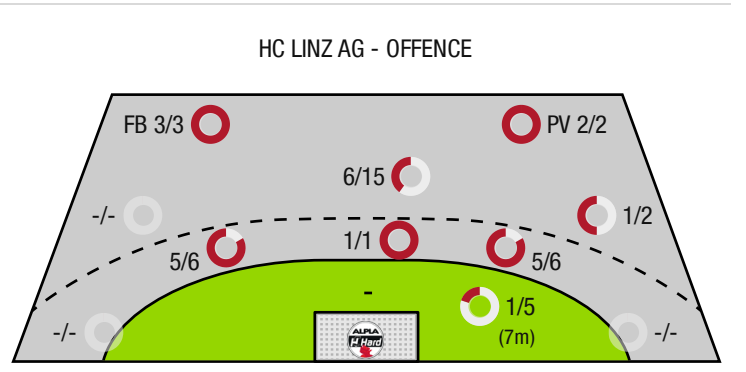
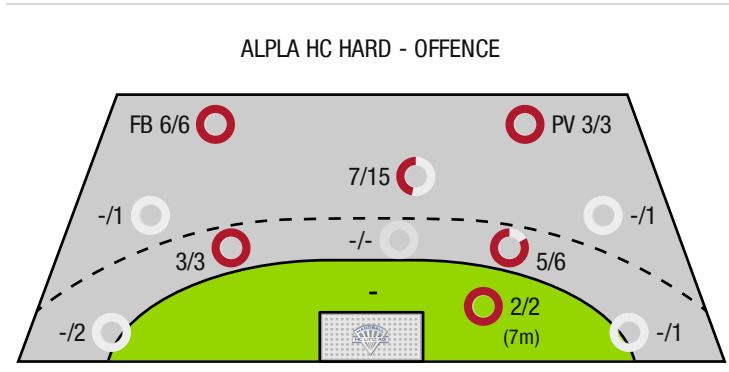
Saves / Shots on target

48%

24 / 50

Goals scored / Attack*

*Attack number is incremented on every change of ball possession.



FB - All fast breaks PV - Pivot shots



Alpla HC Hard

ENDED

26 : 24

(13 : 11)

HC Linz AG



Players			Shots (goals)								Others				Penalties			
No	Name	Pos.	Total	7m	6m	9m	Wing	PV	FB	BT*	TF	ST	BS	AS	YC	2min	RC	BC
12	Gurskis, Lukas	TW	-% (0/0)															
32	Doknic, Golub	TW	-% (0/0)								1			2				
7	Jonsson, Tryggvi Gardar	RL	-% (0/0)										1	1		1		
9	Tokic, Ante	RA	88% (7/8)	2/2	1/1	2/3			2/2	1/1	2			5		1		
11	Runarsson, Tumi	RM	45% (5/11)		1/1	1/7		2/2	1/1	1/1	1			1				
22	Babic, Dejan	KM	100% (2/2)					1/1	1/1		2			1		2		
23	Hakli, Noyan	KM	-% (0/0)															
24	Manaskov, Martin	RL	-% (0/0)															
25	Haunold, Marc-Andre	RL	60% (3/5)			2/4			1/1		3			2		1		
26	Piringer, Jannik	LA	-% (0/0)															
29	Mosblech, Kaspar	KM	-% (0/0)															
33	Sager, Nico	LA	0% (0/1)				0/1											
38	Sgonc, Lennio	RA	83% (5/6)		4/5				1/1					1				
39	Luerzer, Robin	LA	50% (2/4)		2/2		0/2											
47	Fritsch, Lukas	RL	50% (1/2)			1/2					2							
99	Hild, Matthias	RR	100% (1/1)			1/1				1/1						1		
0A	Trautvetter, Jadranko																	
0B	Jonsson, Hannes Jon																	
0C	Maier, Martin																	
			65% (26 /40)	2/2	8/9	7/17	0/3	3/3	6/6	3/3	11	0	1	13	0	6	0	0

A breakthrough (BT) is an additional information for goals that have been achieved from the backcourt. The number of these goals will not be included in the sum of the goals of a player.

Goalkeepers		Shot (saves)							
No	Name	Total	7m	6m	9m	Wing	PV	Fast breaks	Breakthrough
12	Gurskis, Lukas	-% (0 /0)	-% (0 /0)	-% (0 /0)	-% (0 /0)	-% (0 /0)	-% (0 /0)	-% (0 /0)	-% (0 /0)
32	Doknic, Golub	33% (12 /36)	80% (4 /5)	15% (2 /13)	46% (6 /13)	-% (0 /0)	0% (0 /2)	0% (0 /3)	20% (1 /5)
		33% (12 /36)	80% (4 /5)	15% (2 /13)	46% (6 /13)	-% (0 /0)	0% (0 /2)	0% (0 /3)	20% (1 /5)

Team shots	Goals	Saved	Missed	Post	Blocked	Total	Efficiency
7m shots	2	0	0	0	0	2/2	100%
6m shots	8	1	0	0	0	8/9	89%
9m shots	7	4	4	2	0	7/17	41%
Wing shots	0	3	0	0	0	0/3	0%
Pivot	3	0	0	0	0	3/3	100%
Fast breaks	6	0	0	0	0	6/6	100%
Breakthrough	3	0	0	0	0	3/3	100%
	26	8	6	2	0	26/40	65%

LEGEND

PV	Pivot shots
FB	All fast breaks
BT	Breakthrough
TF	Technical fault
ST	Steals
BS	Blocked shots
AS	Assist
YC	Yellow cards
2min	2 Minute suspension
RC	Red cards
BC	Blue cards

It is possible in individual cases, that differences between the sum of individual player statistics and team statistics occur. The reason is that due to the speed of a handball game at individual events our scouts can not assign the player data correctly.



Alpla HC Hard

ENDED

26 : 24

(13 : 11)

HC Linz AG



Players			Shots (goals)								Others				Penalties			
No	Name	Pos.	Total	7m	6m	9m	Wing	PV	FB	BT*	TF	ST	BS	AS	YC	2min	RC	BC
16	Zwicklhuber, David	TW	-% (0/0)															
23	Kishou,Aliaksei	TW	-% (0/0)															
3	Mostl, C	RL	50% (4/8)	0/1	1/1	3/6				2/3	4			5				
6	Bryan, Nana Agyapong	RA	-% (0/0)															
7	Mitterrutzer, Boris	LA	-% (0/0)															
13	Petrovic, Pavle	RR	25% (1/4)	0/1	1/1	0/2				1/2	1			4				
14	Palan, Fabian	RR	-% (0/0)															
19	Moser, Nils	RA	80% (4/5)		4/5											1		
21	Gregoric, Leon	KM	50% (1/2)			0/1		1/1			1			1	1	1		
25	Klewein, Simon	RL	-% (0/0)															
26	Fizuleto, Lucijan	RM	67% (4/6)	1/2	1/1	1/2			1/1	1/1	3							
33	Bohm, Elmar	LA	86% (6/7)		4/5				2/2									
67	Bryslawski, F	RL	100% (1/1)			1/1										1		
92	Stojanovic, Jadranko	KM	100% (1/1)					1/1			1							
93	Klimavets, Andrei	RL	33% (2/6)	0/1		2/5					3			2		1	1	
0A	Berger, Franz																	
0B	Vunjak, Milan														1			
0C	Kainz, Franz																	
			60% (24 /40)	1/5	11/13	7/17	0/0	2/2	3/3	4/6	13	0	0	12	2	5	1	0

A breakthrough (BT) is an additional information for goals that have been achieved from the backcourt. The number of these goals will not be included in the sum of the goals of a player.

Goalkeepers		Shot (saves)							
No	Name	Total	7m	6m	9m	Wing	PV	Fast breaks	Breakthrough
16	Zwicklhuber, David	-% (0 /0)	-% (0 /0)	-% (0 /0)	-% (0 /0)	-% (0 /0)	-% (0 /0)	-% (0 /0)	-% (0 /0)
23	Kishou,Aliaksei	24% (8 /33)	0% (0 /2)	11% (1 /9)	36% (4 /11)	100% (3 /3)	0% (0 /3)	0% (0 /5)	0% (0 /3)
		24% (8 /33)	0% (0 /2)	11% (1 /9)	36% (4 /11)	100% (3 /3)	0% (0 /3)	0% (0 /5)	0% (0 /3)

Team shots	Goals	Saved	Missed	Post	Blocked	Total	Efficiency
7m shots	1	4	0	0	0	1/5	20%
6m shots	11	2	0	0	0	11/13	85%
9m shots	7	6	1	2	1	7/17	41%
Wing shots	0	0	0	0	0	0/0	NaN%
Pivot	2	0	0	0	0	2/2	100%
Fast breaks	3	0	0	0	0	3/3	100%
Breakthrough	4	1	0	1	0	4/6	67%
	24	12	3	2	1	24/40	60%

LEGEND

PV	Pivot shots
FB	All fast breaks
BT	Breakthrough
TF	Technical fault
ST	Steals
BS	Blocked shots
AS	Assist
YC	Yellow cards
2min	2 Minute suspension
RC	Red cards
BC	Blue cards

It is possible in individual cases, that differences between the sum of individual player statistics and team statistics occur. The reason is that due to the speed of a handball game at individual events our scouts can not assign the player data correctly.