



Date: 18/04/26
 Time: 18:30
 Match: Round: 22. Matchday, Match ID: 62070774, Season: 25/26
 Venue: Sporthalle am See
 Referees: ,

MATCH-REPORT

HLA Meisterliga

www.hla.at


#GeballteLeidenschaft

ENDED

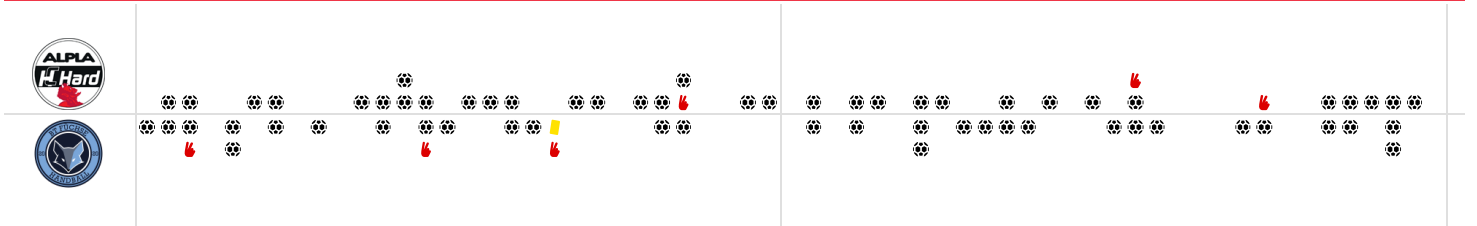


Alpha HC Hard

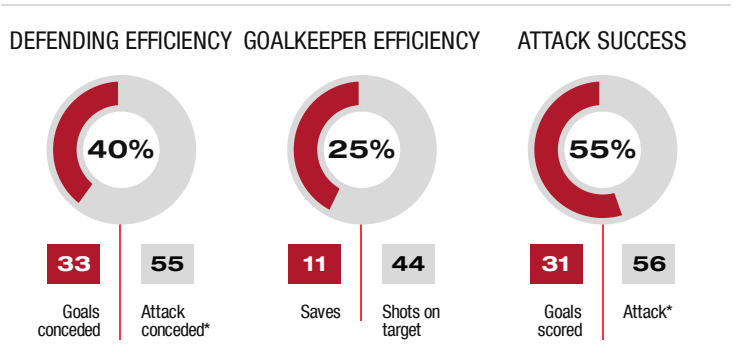
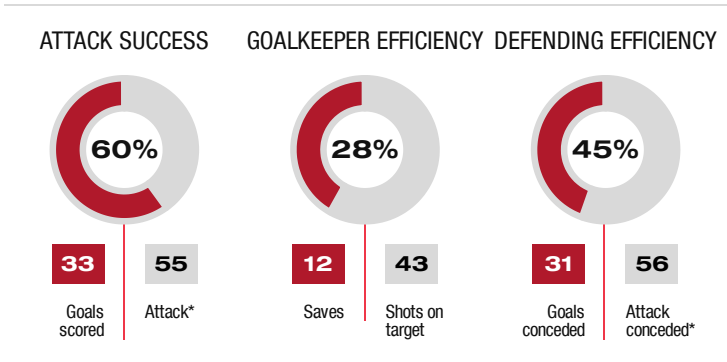
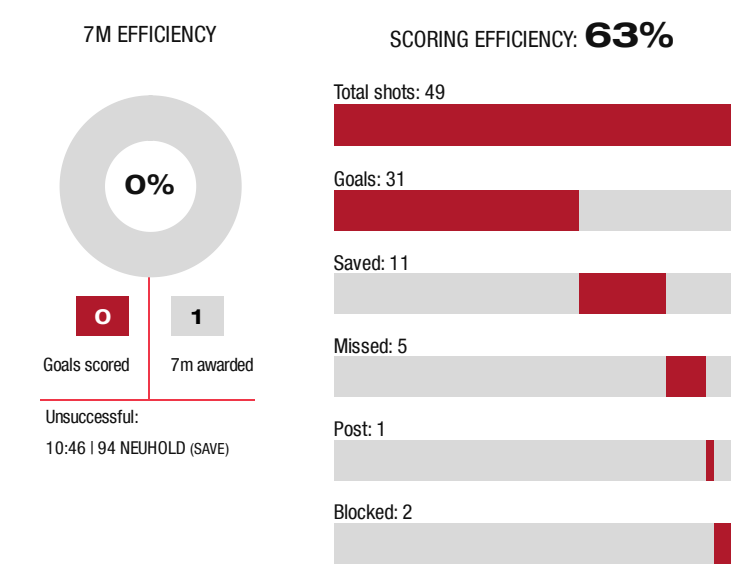
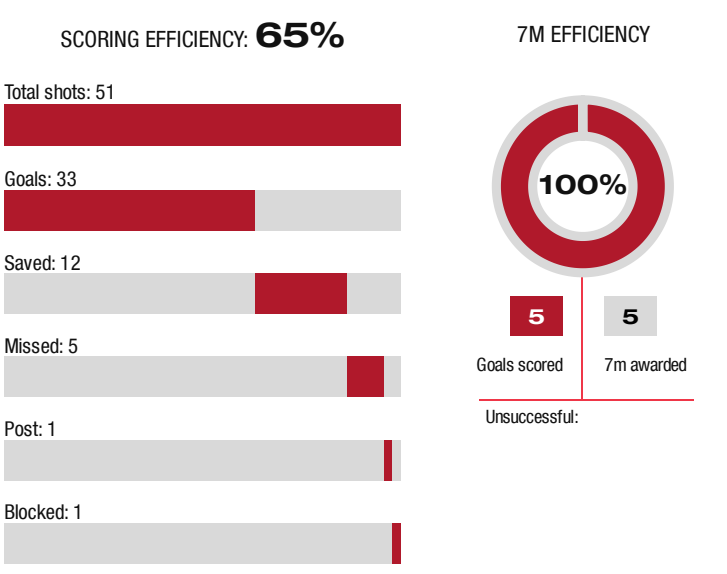
33 : 31
 (19 : 14)



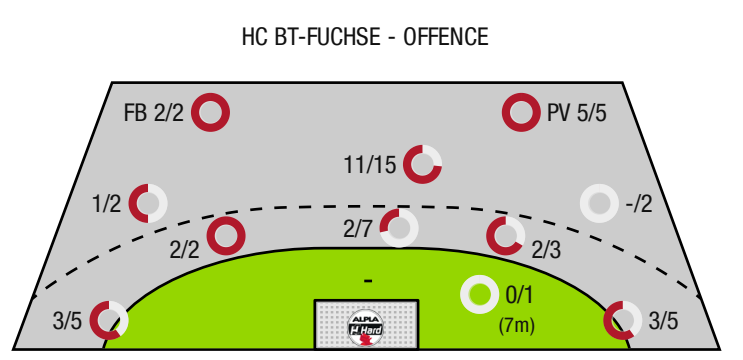
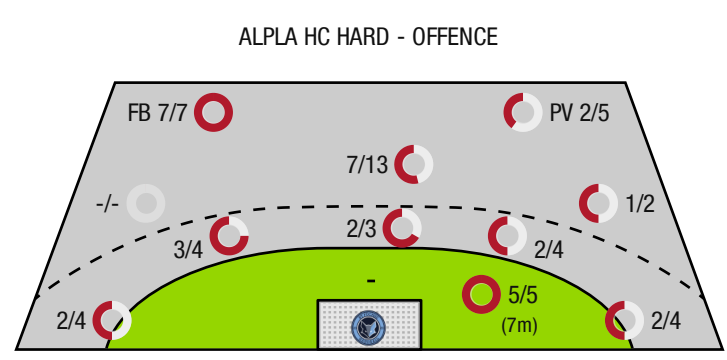
HC BT-Fuchse



Top scorer: Tokic **12** | 2min: **3** | Top scorer: Markusic **9** | 2min: **3**



*Attack number is incremented on every change of ball possession.



FB - All fast breaks PV - Pivot shots



Alpla HC Hard

ENDED

33 : 31

(19 : 14)

HC BT-Fuchse



Players			Shots (goals)								Others				Penalties			
No	Name	Pos.	Total	7m	6m	9m	Wing	PV	FB	BT*	TF	ST	BS	AS	YC	2min	RC	BC
12	Gurskis, Lukas	TW	-% (0/0)															
32	Doknic, Golub	TW	-% (0/0)											1				
7	Jonsson, Tryggvi Gardar	RL	-% (0/0)									1		1				
9	Tokic, Ante	RA	86% (12/14)	5/5	1/2	1/1	1/2		4/4	1/1				2				
11	Runarsson, Tumi	RM	80% (4/5)		1/1	3/4				2/2	3			2				
22	Babic, Dejan	KM	57% (4/7)		0/1			2/4	2/2	0/1				1				
24	Manaskov, Martin	RL	-% (0/0)								1							
25	Haunold, Marc-Andre	RL	25% (1/4)		0/1	1/3						1	1	1		2		
26	Piringer, Jannik	LA	-% (0/0)															
29	Mosblech, Kaspar	KM	-% (0/0)															
33	Sager, Nico	LA	100% (1/1)				1/1											
35	Haemmerle, Matthias	RM	-% (0/0)															
38	Sgonc, Lennio	RA	50% (1/2)				1/2											
39	Luerzer, Robin	LA	33% (1/3)				1/3				1			1				
47	Fritsch, Lukas	RL	60% (6/10)		3/4	2/4		0/1	1/1	2/3	1		1	1				
99	Hild, Matthias	RR	60% (3/5)		2/2	1/3				2/2	1	1		3		1		
0A	Trautvetter, Jadranko																	
0B	Jonsson, Hannes Jon																	
0C	Maier, Martin																	
			65% (33/51)	5/5	7/11	8/15	4/8	2/5	7/7	7/9	7	3	2	13	0	3	0	0

A breakthrough (BT) is an additional information for goals that have been achieved from the backcourt. The number of these goals will not be included in the sum of the goals of a player.

Goalkeepers		Shot (saves)							
No	Name	Total	7m	6m	9m	Wing	PV	Fast breaks	Breakthrough
12	Gurskis, Lukas	-% (0/0)	-% (0/0)	-% (0/0)	-% (0/0)	-% (0/0)	-% (0/0)	-% (0/0)	-% (0/0)
32	Doknic, Golub	26% (11/42)	100% (1/1)	25% (2/8)	25% (4/16)	40% (4/10)	0% (0/5)	0% (0/2)	25% (1/4)
		26% (11/42)	100% (1/1)	25% (2/8)	25% (4/16)	40% (4/10)	0% (0/5)	0% (0/2)	25% (1/4)

Team shots	Goals	Saved	Missed	Post	Blocked	Total	Efficiency
7m shots	5	0	0	0	0	5/5	100%
6m shots	7	2	1	0	1	7/11	64%
9m shots	8	5	1	1	0	8/15	53%
Wing shots	4	2	0	0	0	4/8	50%
Pivot	2	3	0	0	0	2/5	40%
Fast breaks	7	0	0	0	0	7/7	100%
Breakthrough	7	1	0	0	0	7/9	78%
	33	12	5	1	1	33/51	65%

LEGEND

PV	Pivot shots
FB	All fast breaks
BT	Breakthrough
TF	Technical fault
ST	Steals
BS	Blocked shots
AS	Assist
YC	Yellow cards
2min	2 Minute suspension
RC	Red cards
BC	Blue cards

It is possible in individual cases, that differences between the sum of individual player statistics and team statistics occur. The reason is that due to the speed of a handball game at individual events our scouts can not assign the player data correctly.



Alpla HC Hard

ENDED

33 : 31

(19 : 14)

HC BT-Fuchse



Players			Shots (goals)								Others				Penalties			
No	Name	Pos.	Total	7m	6m	9m	Wing	PV	FB	BT*	TF	ST	BS	AS	YC	2min	RC	BC
24	Mitterdorfer, Julian	TW	-% (0/0)															
46	Kroiss, Jan	TW	-% (0/0)															
2	Meleschnig, Clemens	KM	67% (2/3)		0/1			1/1	1/1									
3	Nenadic, Thomas	RM	0% (0/1)			0/1					1							
4	Philipp, Nenadic	LA	0% (0/1)				0/1							1				
13	Tsakouridis, Christoforos	RM	67% (4/6)		2/3	2/3				3/3	3			2		1		
17	Kuhn, Thomas	LA	67% (2/3)				2/3											
23	Wolfger, Christoph	KM	100% (3/3)		1/1		2/2									1		
25	Kosi, Tilen	RM	100% (1/1)		1/1						2			1				
26	Breg, Martin	RA	33% (1/3)				1/3											
39	Rastoder, Adel	RL	-% (0/0)								3							
42	Schiffleitner, Julian	RR	0% (0/3)		0/2	0/1				0/1								
77	Markusic, Dorian	RM	69% (9/13)		0/1	8/11			1/1					2		1		
79	Jankovic, Sandro	KM	80% (4/5)		0/1			4/4										
94	Neuhold, Christoph	RM	71% (5/7)	0/1	2/2	2/3	1/1				1		1	3				
95	Sabazgiraeu, Hazbulat	KM	-% (0/0)											1				
0A	Marinovic, Luka																	
0B	Teras, Benjamin														1			
0C	Santos, Raul																	
			63% (31 /49)	0/1	6/12	12/19	6/10	5/5	2/2	3/4	10	0	1	10	1	3	0	0

A breakthrough (BT) is an additional information for goals that have been achieved from the backcourt. The number of these goals will not be included in the sum of the goals of a player.

Goalkeepers		Shot (saves)							
No	Name	Total	7m	6m	9m	Wing	PV	Fast breaks	Breakthrough
24	Mitterdorfer, Julian	33% (8 /24)	0% (0 /1)	14% (1 /7)	56% (5 /9)	0% (0 /3)	67% (2 /3)	0% (0 /1)	13% (1 /8)
46	Kroiss, Jan	21% (4 /19)	0% (0 /4)	50% (1 /2)	0% (0 /4)	67% (2 /3)	50% (1 /2)	0% (0 /4)	-% (0 /0)
		28% (12 /43)	0% (0 /5)	22% (2 /9)	38% (5 /13)	33% (2 /6)	60% (3 /5)	0% (0 /5)	13% (1 /8)

Team shots	Goals	Saved	Missed	Post	Blocked	Total	Efficiency	
7m shots	0	1	0	0	0	0/1	0%	
6m shots	6	2	1	1	2	6/12	50%	
9m shots	12	4	3	0	0	12/19	63%	
Wing shots	6	4	0	0	0	6/10	60%	
Pivot	5	0	0	0	0	5/5	100%	
Fast breaks	2	0	0	0	0	2/2	100%	
Breakthrough	3	1	0	0	0	3/4	75%	
		31	11	5	1	2	31/49	63%

LEGEND

PV	Pivot shots
FB	All fast breaks
BT	Breakthrough
TF	Technical fault
ST	Steals
BS	Blocked shots
AS	Assist
YC	Yellow cards
2min	2 Minute suspension
RC	Red cards
BC	Blue cards

It is possible in individual cases, that differences between the sum of individual player statistics and team statistics occur. The reason is that due to the speed of a handball game at individual events our scouts can not assign the player data correctly.