



Date: 07/02/26
 Time: 18:00
 Match: Round: 12. Matchday, Match ID: 62245770, Season: 25/26
 Venue: Sportzentrum Traun
 Referees: ,

MATCH-REPORT

HLA Challenge

#GeballteLeidenschaft

ENDED

28 : 36

(12 : 18)

| | |
|------|--|
| | |
|------|--|

Top scorer: 2min: 0 Top scorer: 2min: 0

SCORING EFFICIENCY: **NAN%** 7M EFFICIENCY

Total shots: 0

Goals: 0

Saved: 0

Missed: 0

Post: 0

Blocked: 0

0%

Goals scored

7m awarded

Unsuccessful:

7M EFFICIENCY SCORING EFFICIENCY: **NAN%**

Total shots: 0

Goals: 0

Saved: 0

Missed: 0

Post: 0

Blocked: 0

0%

Goals scored

7m awarded

Unsuccessful:

ATTACK SUCCESS GOALKEEPER EFFICIENCY DEFENDING EFFICIENCY

0%

0%

0%

Goals scored

Attack*

Saves

Shots on target

Goals conceded

Attack conceded*

DEFENDING EFFICIENCY GOALKEEPER EFFICIENCY ATTACK SUCCESS

0%

0%

0%

Goals conceded

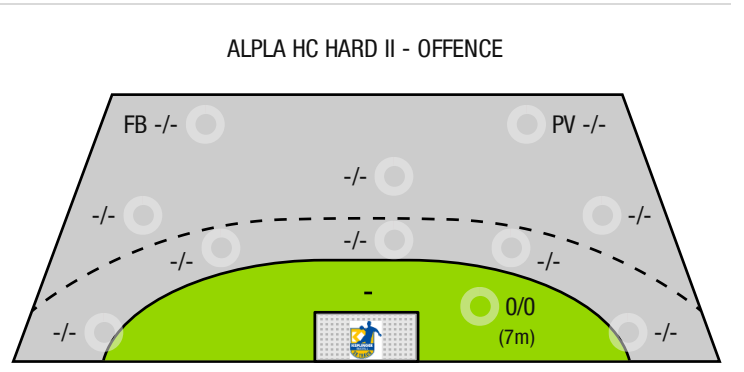
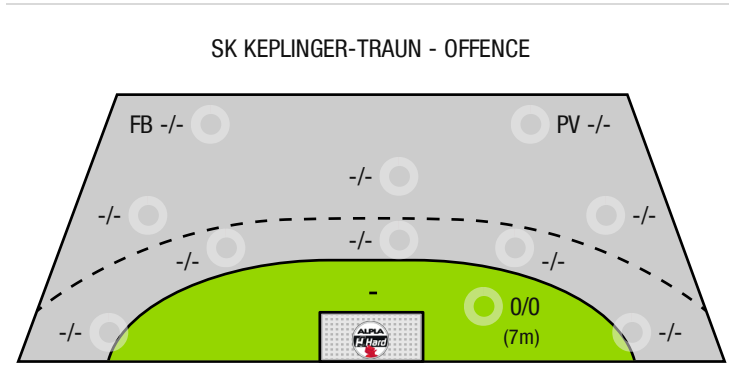
Attack conceded*

Saves

Shots on target

Goals scored

Attack*



FB - All fast breaks PV - Pivot shots



SK Keplinger-Traun

ENDED

28 : 36

(12 : 18)

Alpla HC Hard II



| Players | | | Shots (goals) | | | | | | | | Others | | | | Penalties | | | |
|---------|------|------|---------------|-----|-----|-----|------|-----|-----|-----|--------|----|----|----|-----------|------|----|----|
| No | Name | Pos. | Total | 7m | 6m | 9m | Wing | PV | FB | BT* | TF | ST | BS | AS | YC | 2min | RC | BC |
| | | | -% (0 / 0) | 0/0 | 0/0 | 0/0 | 0/0 | 0/0 | 0/0 | 0/0 | 0 | 0 | 0 | 0 | 0 | 0 | 0 | 0 |

A breakthrough (BT) is an additional information for goals that have been achieved from the backcourt. The number of these goals will not be included in the sum of the goals of a player.

| Goalkeepers | | Shot (saves) | | | | | | | |
|-------------|------|--------------|------------|------------|------------|------------|------------|-------------|--------------|
| No | Name | Total | 7m | 6m | 9m | Wing | PV | Fast breaks | Breakthrough |
| | | -% (0 / 0) | -% (0 / 0) | -% (0 / 0) | -% (0 / 0) | -% (0 / 0) | -% (0 / 0) | -% (0 / 0) | -% (0 / 0) |

| Team shots | Goals | Saved | Missed | Post | Blocked | Total | Efficiency |
|--------------|-------|-------|--------|------|---------|-------|------------|
| 7m shots | 0 | 0 | 0 | 0 | 0 | 0/0 | -% |
| 6m shots | 0 | 0 | 0 | 0 | 0 | 0/0 | NaN% |
| 9m shots | 0 | 0 | 0 | 0 | 0 | 0/0 | NaN% |
| Wing shots | 0 | 0 | 0 | 0 | 0 | 0/0 | NaN% |
| Pivot | 0 | 0 | 0 | 0 | 0 | 0/0 | NaN% |
| Fast breaks | 0 | 0 | 0 | 0 | 0 | 0/0 | NaN% |
| Breakthrough | 0 | 0 | 0 | 0 | 0 | 0/0 | NaN% |
| | 0 | 0 | 0 | 0 | 0 | 0/0 | -% |

LEGEND

| | |
|------|---------------------|
| PV | Pivot shots |
| FB | All fast breaks |
| BT | Breakthrough |
| TF | Technical fault |
| ST | Steals |
| BS | Blocked shots |
| AS | Assist |
| YC | Yellow cards |
| 2min | 2 Minute suspension |
| RC | Red cards |
| BC | Blue cards |

It is possible in individual cases, that differences between the sum of individual player statistics and team statistics occur. The reason is that due to the speed of a handball game at individual events our scouts can not assign the player data correctly.



SK Keplinger-Traun

ENDED

28 : 36

(12 : 18)

Alpla HC Hard II



| Players | | | Shots (goals) | | | | | | | | Others | | | | Penalties | | | |
|---------|------|------|---------------|-----|-----|-----|------|-----|-----|-----|--------|----|----|----|-----------|------|----|----|
| No | Name | Pos. | Total | 7m | 6m | 9m | Wing | PV | FB | BT* | TF | ST | BS | AS | YC | 2min | RC | BC |
| | | | -% (0 / 0) | 0/0 | 0/0 | 0/0 | 0/0 | 0/0 | 0/0 | 0/0 | 0 | 0 | 0 | 0 | 0 | 0 | 0 | 0 |

A breakthrough (BT) is an additional information for goals that have been achieved from the backcourt. The number of these goals will not be included in the sum of the goals of a player.

| Goalkeepers | | Shot (saves) | | | | | | | |
|-------------|------|--------------|------------|------------|------------|------------|------------|-------------|--------------|
| No | Name | Total | 7m | 6m | 9m | Wing | PV | Fast breaks | Breakthrough |
| | | -% (0 / 0) | -% (0 / 0) | -% (0 / 0) | -% (0 / 0) | -% (0 / 0) | -% (0 / 0) | -% (0 / 0) | -% (0 / 0) |

| Team shots | Goals | Saved | Missed | Post | Blocked | Total | Efficiency |
|--------------|-------|-------|--------|------|---------|-------|------------|
| 7m shots | 0 | 0 | 0 | 0 | 0 | 0/0 | -% |
| 6m shots | 0 | 0 | 0 | 0 | 0 | 0/0 | NaN% |
| 9m shots | 0 | 0 | 0 | 0 | 0 | 0/0 | NaN% |
| Wing shots | 0 | 0 | 0 | 0 | 0 | 0/0 | NaN% |
| Pivot | 0 | 0 | 0 | 0 | 0 | 0/0 | NaN% |
| Fast breaks | 0 | 0 | 0 | 0 | 0 | 0/0 | NaN% |
| Breakthrough | 0 | 0 | 0 | 0 | 0 | 0/0 | NaN% |
| | 0 | 0 | 0 | 0 | 0 | 0/0 | -% |

LEGEND

| | |
|------|---------------------|
| PV | Pivot shots |
| FB | All fast breaks |
| BT | Breakthrough |
| TF | Technical fault |
| ST | Steals |
| BS | Blocked shots |
| AS | Assist |
| YC | Yellow cards |
| 2min | 2 Minute suspension |
| RC | Red cards |
| BC | Blue cards |

It is possible in individual cases, that differences between the sum of individual player statistics and team statistics occur. The reason is that due to the speed of a handball game at individual events our scouts can not assign the player data correctly.