



Date: 07/02/26  
 Time: 17:00  
 Match: Round: 16. Matchday, Match ID: 62246618, Season: 25/26  
 Venue: Fritz Grassinger sports hall  
 Referees: ,

# MATCH-REPORT

HLA Challenge

#GeballteLeidenschaft

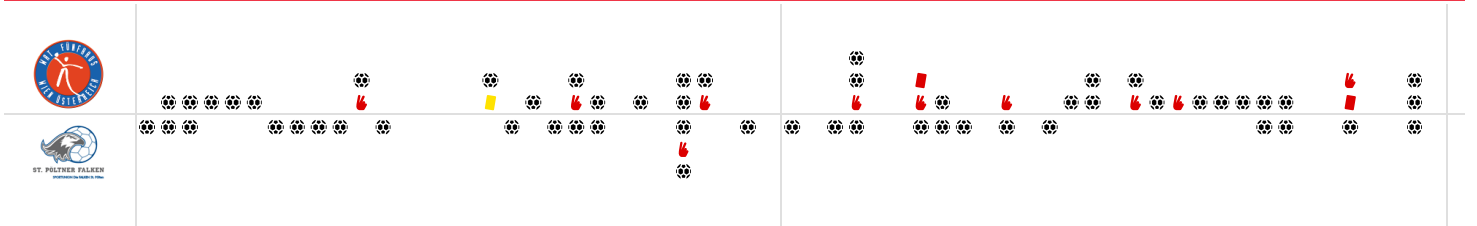
ENDED

## Wat Funfhaus HB

# 29 : 27

( 14 : 15 )

## Sportunion Die Falken St Polten



Top scorer: Baxter **14**      2min: **9**      Top scorer: Tiefenbacher **8**      2min: **1**

**SCORING EFFICIENCY: 60%**

Total shots: 48

Goals: 29

Saved: 13

Missed: 6

Post: 2

Blocked: 0

**7M EFFICIENCY**

**67%**

2 Goals scored | 3 7m awarded

Unsuccessful:  
09:29 | 9 KROPF (SAVE)

**SCORING EFFICIENCY: 52%**

Total shots: 52

Goals: 27

Saved: 17

Missed: 8

Post: 6

Blocked: 0

**7M EFFICIENCY**

**64%**

7 Goals scored | 11 7m awarded

Unsuccessful:  
27:17 | 18 BRUCKNER (SAVE)  
42:30 | 25 TIEFENBACHER (2) (SAVE)  
47:57 | 25 TIEFENBACHER (2) (SAVE)

**ATTACK SUCCESS**      **GOALKEEPER EFFICIENCY**      **DEFENDING EFFICIENCY**

**48%**

29 Goals scored | 61 Attack\*

**33%**

13 Saves | 40 Shots on target

**56%**

27 Goals conceded | 61 Attack conceded\*

52:09 | 32 WIENINGER (SAVE)

**DEFENDING EFFICIENCY**      **GOALKEEPER EFFICIENCY**      **ATTACK SUCCESS**

**52%**

29 Goals conceded | 61 Attack conceded\*

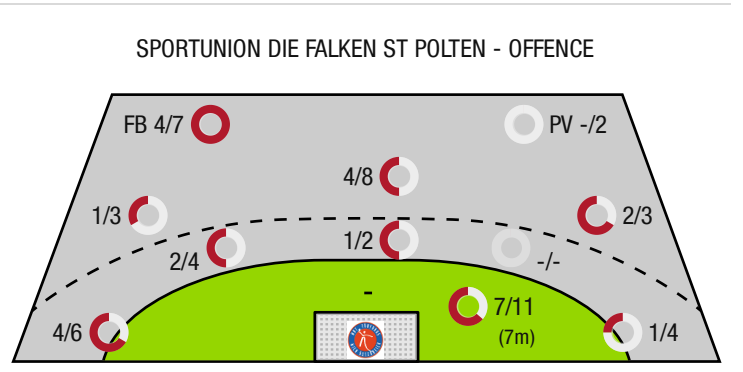
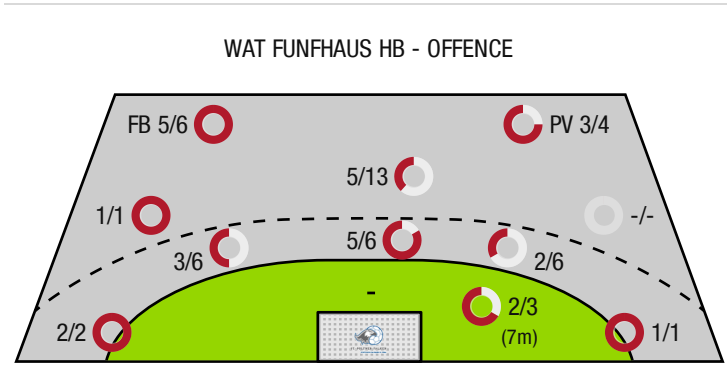
**37%**

17 Saves | 46 Shots on target

**44%**

27 Goals scored | 61 Attack\*

\*Attack number is incremented on every change of ball possession.



FB - All fast breaks      PV - Pivot shots



Wat Funfhaus HB

ENDED

29 : 27

( 14 : 15 )

Sportunion Die Falken St  
Polten

Players			Shots (goals)								Others				Penalties			
No	Name	Pos.	Total	7m	6m	9m	Wing	PV	FB	BT*	TF	ST	BS	AS	YC	2min	RC	BC
1	Weghuber, Christoph	TW	-% (0/0)															
98	Pavic, Jakov	TW	-% (0/0)															
8	Georg, Mayr Pranzeneder		60% (3/5)		1/2	2/3				1/2	1			1		1	1	
9	Kropf, Elias	RA	50% (1/2)	0/1			1/1				2					1		
14	Scholz, Oliver	LA	-% (0/0)															
15	Nickel, Carsten	RR	0% (0/1)		0/1					0/1						1		
22	Vuksa, Goran	KM	75% (3/4)		1/1			2/3			1	1			1	3	1	
23	Fetz, Leonard	KM	-% (0/0)										1			2		
29	Matzinger, Philip	LA	-% (0/0)															
32	Huber, Bernhard	LA	67% (4/6)		2/3	0/1	1/1		1/1	1/1	5	1		4				
33	Toljevic, F	KM	-% (0/0)															
34	Paha, Leonard	RR	25% (1/4)		1/2	0/2				1/1	2			1				
55	Fernandez, Iago		100% (1/1)						1/1									
59	Baxter, John	RL	74% (14/19)	2/2	4/5	3/6	1/1	1/1	3/4	4/4	2	1		4				
77	Zalewski, Emil	RL	0% (0/2)		0/2					0/2		1				1		
93	Stab, Bence		50% (2/4)		1/2	1/2				1/2								
0A	Issing, Timo																	
0B	Monev, Ivan																	
0C	Friedel, Felix																	
0D	Zganec, D																	
0	Fetz, Leonard																	
			60% (29/48)	2/3	10/18	6/14	3/3	3/4	5/6	8/13	13	4	0	11	1	9	2	0

A breakthrough (BT) is an additional information for goals that have been achieved from the backcourt. The number of these goals will not be included in the sum of the goals of a player.

Goalkeepers		Shot (saves)							
No	Name	Total	7m	6m	9m	Wing	PV	Fast breaks	Breakthrough
1	Weghuber, Christoph	50% (3/6)	50% (3/6)	-% (0/0)	-% (0/0)	-% (0/0)	-% (0/0)	-% (0/0)	-% (0/0)
98	Pavic, Jakov	37% (14/38)	20% (1/5)	50% (3/6)	36% (4/11)	38% (3/8)	100% (1/1)	33% (2/6)	0% (0/3)
		39% (17/44)	36% (4/11)	50% (3/6)	36% (4/11)	38% (3/8)	100% (1/1)	33% (2/6)	0% (0/3)

Team shots	Goals	Saved	Missed	Post	Blocked	Total	Efficiency
7m shots	2	1	0	0	0	2/3	67%
6m shots	10	5	2	1	0	10/18	56%
9m shots	6	5	2	1	0	6/14	43%
Wing shots	3	0	0	0	0	3/3	100%
Pivot	3	1	0	0	0	3/4	75%
Fast breaks	5	1	0	0	0	5/6	83%
Breakthrough	8	2	0	1	0	8/13	62%
	29	13	6	2	0	29/48	60%

## LEGEND

PV	Pivot shots
FB	All fast breaks
BT	Breakthrough
TF	Technical fault
ST	Steals
BS	Blocked shots
AS	Assist
YC	Yellow cards
2min	2 Minute suspension
RC	Red cards
BC	Blue cards

It is possible in individual cases, that differences between the sum of individual player statistics and team statistics occur. The reason is that due to the speed of a handball game at individual events our scouts can not assign the player data correctly.



Wat Funfhaus HB

ENDED

**29 : 27**

( 14 : 15 )

Sportunion Die Falken St  
Polten

Players			Shots (goals)								Others				Penalties			
No	Name	Pos.	Total	7m	6m	9m	Wing	PV	FB	BT*	TF	ST	BS	AS	YC	2min	RC	BC
1	Bundschuh, Manuel	TW	-% (0/0)															
68	Hubner, Marc	TW	0% (0/1)								1			1				
5	Neumaier, Jan	RM	70% (7/10)	2/2		4/7			1/1		2	1		2				
7	Riedl, Tobias	RR	-% (0/0)															
8	Hubner, Jan	RA	38% (3/8)		0/1		1/3	0/1	1/2									
10	Zettel, Martin	RM	100% (1/1)		1/1					1/1	1							
14	Tiefenbacher, Jakob	KM	50% (1/2)					0/1	1/1		1			1				
15	Pirkfellner, Paul	KM	-% (0/0)															
18	Bruckner, Matthias	LA	45% (5/11)	1/2			3/6		1/3									
21	Pils, Alexander	KM	-% (0/0)									1						
23	Eberl, Jonas	RL	-% (0/0)															
25	Tiefenbacher, Valentin	RM	57% (8/14)	3/5	2/4	2/4	1/1			2/2	2					1		
32	Wieninger, Kevin	RM	33% (1/3)	1/2		0/1					2							
33	Pfaffinger, Jurgen	RA	-% (0/0)															
41	Kral, Johannes	RL	50% (1/2)			1/2					2							
0A	Falthause, Gregor																	
0B	Djukic, Damir																	
			52% (27/52)	7/11	3/6	7/14	5/10	0/2	4/7	3/3	11	2	0	4	0	1	0	0

A breakthrough (BT) is an additional information for goals that have been achieved from the backcourt. The number of these goals will not be included in the sum of the goals of a player.

Goalkeepers		Shot (saves)							
No	Name	Total	7m	6m	9m	Wing	PV	Fast breaks	Breakthrough
1	Bundschuh, Manuel	-% (0/0)	-% (0/0)	-% (0/0)	-% (0/0)	-% (0/0)	-% (0/0)	-% (0/0)	-% (0/0)
68	Hubner, Marc	31% (13/42)	33% (1/3)	33% (5/15)	45% (5/11)	0% (0/3)	25% (1/4)	17% (1/6)	20% (2/10)
		31% (13/42)	33% (1/3)	33% (5/15)	45% (5/11)	0% (0/3)	25% (1/4)	17% (1/6)	20% (2/10)

Team shots	Goals	Saved	Missed	Post	Blocked	Total	Efficiency
7m shots	7	4	0	0	0	7/11	64%
6m shots	3	3	0	0	0	3/6	50%
9m shots	7	4	2	1	0	7/14	50%
Wing shots	5	3	0	2	0	5/10	50%
Pivot	0	1	0	1	0	0/2	0%
Fast breaks	4	2	0	1	0	4/7	57%
Breakthrough	3	0	0	0	0	3/3	100%
	27	17	8	6	0	27/52	52%

## LEGEND

PV	Pivot shots
FB	All fast breaks
BT	Breakthrough
TF	Technical fault
ST	Steals
BS	Blocked shots
AS	Assist
YC	Yellow cards
2min	2 Minute suspension
RC	Red cards
BC	Blue cards

It is possible in individual cases, that differences between the sum of individual player statistics and team statistics occur. The reason is that due to the speed of a handball game at individual events our scouts can not assign the player data correctly.