



Date: 03/05/26  
 Time: 18:00  
 Match: Round: 7. Matchday, Match ID: 69333984, Season: 25/26  
 Venue: Sporthalle Langenlois  
 Referees: ,

# MATCH-REPORT

HLA Challenge

#GeballteLeidenschaft

ENDED

27 : 34

( 14 : 18 )

--	--

Top scorer:  2min:  0

**SCORING EFFICIENCY: 100%**

Total shots: 28

Goals: 28

Saved: 0

Missed: 0

Post: 0

Blocked: 0

**7M EFFICIENCY**

0%

Goals scored

0

7m awarded

0

Unsuccessful:

**SCORING EFFICIENCY: 100%**

Total shots: 33

Goals: 33

Saved: 0

Missed: 0

Post: 0

Blocked: 0

**7M EFFICIENCY**

0%

Goals scored

0

7m awarded

0

Unsuccessful:

**ATTACK SUCCESS**    **GOALKEEPER EFFICIENCY**    **DEFENDING EFFICIENCY**

0%                      0%                      0%

Goals scored

28

Attack\*

0

Saves

0

Shots on target

33

Goals conceded

33

Attack conceded\*

0

**DEFENDING EFFICIENCY**    **GOALKEEPER EFFICIENCY**    **ATTACK SUCCESS**

0%                      0%                      0%

Goals conceded

28

Attack conceded\*

0

Saves

0

Shots on target

28

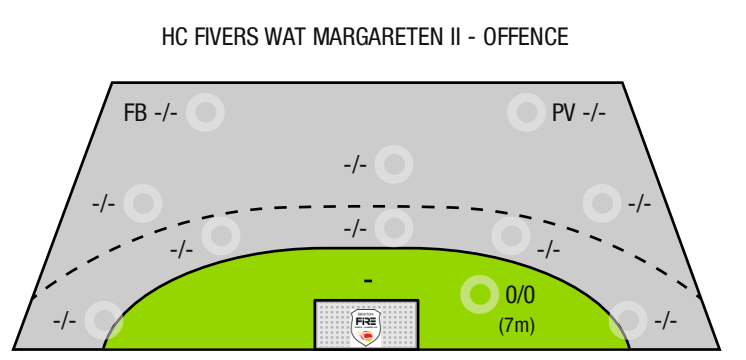
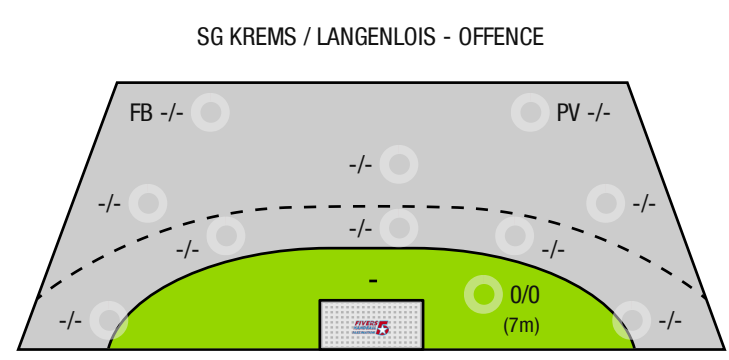
Goals scored

33

Attack\*

0

\*Attack number is incremented on every change of ball possession.



FB - All fast breaks    PV - Pivot shots



SG Krems / Langenlois

ENDED

27 : 34 HC Fivers Wat Margareten II



( 14 : 18 )

Players			Shots (goals)								Others				Penalties			
No	Name	Pos.	Total	7m	6m	9m	Wing	PV	FB	BT*	TF	ST	BS	AS	YC	2min	RC	BC
			<b>100%</b> (28 /28)	0/0	0/0	0/0	0/0	0/0	0/0	0/0	0	0	0	0	0	0	0	0

A breakthrough (BT) is an additional information for goals that have been achieved from the backcourt. The number of these goals will not be included in the sum of the goals of a player.

Goalkeepers		Shot (saves)							
No	Name	Total	7m	6m	9m	Wing	PV	Fast breaks	Breakthrough
		<b>-%</b> (0 /0)	<b>-%</b> (0 /0)	<b>-%</b> (0 /0)	<b>-%</b> (0 /0)	<b>-%</b> (0 /0)	<b>-%</b> (0 /0)	<b>-%</b> (0 /0)	<b>-%</b> (0 /0)

Team shots	Goals	Saved	Missed	Post	Blocked	Total	Efficiency
7m shots	0	0	0	0	0	<b>0/0</b>	<b>-%</b>
6m shots	0	0	0	0	0	<b>0/0</b>	<b>NaN%</b>
9m shots	0	0	0	0	0	<b>0/0</b>	<b>NaN%</b>
Wing shots	0	0	0	0	0	<b>0/0</b>	<b>NaN%</b>
Pivot	0	0	0	0	0	<b>0/0</b>	<b>NaN%</b>
Fast breaks	0	0	0	0	0	<b>0/0</b>	<b>NaN%</b>
Breakthrough	0	0	0	0	0	<b>0/0</b>	<b>NaN%</b>
	<b>28</b>	<b>0</b>	<b>0</b>	<b>0</b>	<b>0</b>	<b>28/28</b>	<b>100%</b>

## LEGEND

PV	Pivot shots
FB	All fast breaks
BT	Breakthrough
TF	Technical fault
ST	Steals
BS	Blocked shots
AS	Assist
YC	Yellow cards
2min	2 Minute suspension
RC	Red cards
BC	Blue cards

It is possible in individual cases, that differences between the sum of individual player statistics and team statistics occur. The reason is that due to the speed of a handball game at individual events our scouts can not assign the player data correctly.



SG Krems / Langenlois

ENDED

27 : 34 HC Fivers Wat Margareten

( 14 : 18 )



Players			Shots (goals)								Others				Penalties			
No	Name	Pos.	Total	7m	6m	9m	Wing	PV	FB	BT*	TF	ST	BS	AS	YC	2min	RC	BC
			<b>100%</b> (33 /33)	0/0	0/0	0/0	0/0	0/0	0/0	0/0	0	0	0	0	0	0	0	0

A breakthrough (BT) is an additional information for goals that have been achieved from the backcourt. The number of these goals will not be included in the sum of the goals of a player.

Goalkeepers		Shot (saves)							
No	Name	Total	7m	6m	9m	Wing	PV	Fast breaks	Breakthrough
		<b>-%</b> (0 /0)	<b>-%</b> (0 /0)	<b>-%</b> (0 /0)	<b>-%</b> (0 /0)	<b>-%</b> (0 /0)	<b>-%</b> (0 /0)	<b>-%</b> (0 /0)	<b>-%</b> (0 /0)

Team shots	Goals	Saved	Missed	Post	Blocked	Total	Efficiency
7m shots	0	0	0	0	0	<b>0/0</b>	<b>-%</b>
6m shots	0	0	0	0	0	<b>0/0</b>	<b>NaN%</b>
9m shots	0	0	0	0	0	<b>0/0</b>	<b>NaN%</b>
Wing shots	0	0	0	0	0	<b>0/0</b>	<b>NaN%</b>
Pivot	0	0	0	0	0	<b>0/0</b>	<b>NaN%</b>
Fast breaks	0	0	0	0	0	<b>0/0</b>	<b>NaN%</b>
Breakthrough	0	0	0	0	0	<b>0/0</b>	<b>NaN%</b>
	<b>33</b>	<b>0</b>	<b>0</b>	<b>0</b>	<b>0</b>	<b>33/33</b>	<b>100%</b>

## LEGEND

PV	Pivot shots
FB	All fast breaks
BT	Breakthrough
TF	Technical fault
ST	Steals
BS	Blocked shots
AS	Assist
YC	Yellow cards
2min	2 Minute suspension
RC	Red cards
BC	Blue cards

It is possible in individual cases, that differences between the sum of individual player statistics and team statistics occur. The reason is that due to the speed of a handball game at individual events our scouts can not assign the player data correctly.