



Date: 27/05/26  
 Time: 19:30  
 Match: Round: 6. Matchday, Match ID: 71361294, Season: 25/26  
 Venue: Sterner Arena  
 Referees: ,

# MATCH-REPORT

HLA Challenge

#GeballteLeidenschaft

ENDED

## 32 : 32

( 18 : 14 )

|  |  |
|--|--|
|  |  |
|--|--|

Top scorer:  2min:  Top scorer:  2min:

SCORING EFFICIENCY: **NAN%**      7M EFFICIENCY

Total shots: 0

Goals: 0

Saved: 0

Missed: 0

Post: 0

Blocked: 0

0%

Goals scored

7m awarded

Unsuccessful:

7M EFFICIENCY      SCORING EFFICIENCY: **NAN%**

Total shots: 0

Goals: 0

Saved: 0

Missed: 0

Post: 0

Blocked: 0

0%

Goals scored

7m awarded

Unsuccessful:

ATTACK SUCCESS      GOALKEEPER EFFICIENCY      DEFENDING EFFICIENCY

0%

Goals scored    Attack\*

0%

Saves    Shots on target

0%

Goals conceded    Attack conceded\*

DEFENDING EFFICIENCY      GOALKEEPER EFFICIENCY      ATTACK SUCCESS

0%

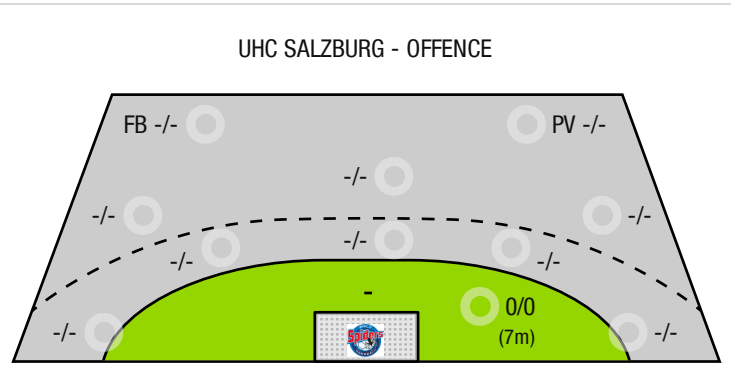
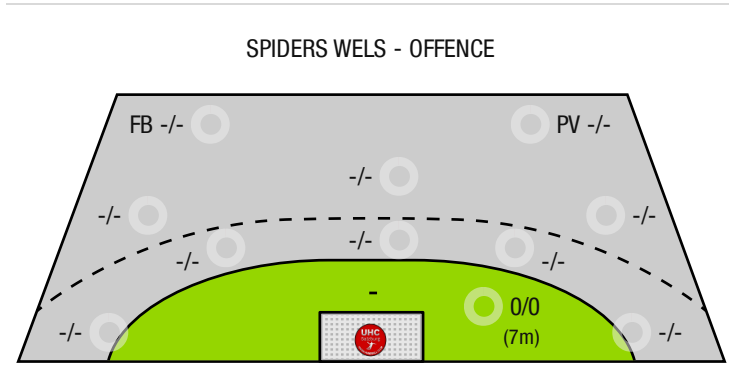
Goals conceded    Attack conceded\*

0%

Saves    Shots on target

0%

Goals scored    Attack\*



FB - All fast breaks    PV - Pivot shots



Spiders Wels

ENDED

**32 : 32**

( 18 : 14 )

UHC Salzburg



| Players |      |      | Shots (goals) |     |     |     |      |     |     |     | Others |    |    |    | Penalties |      |    |    |
|---------|------|------|---------------|-----|-----|-----|------|-----|-----|-----|--------|----|----|----|-----------|------|----|----|
| No      | Name | Pos. | Total         | 7m  | 6m  | 9m  | Wing | PV  | FB  | BT* | TF     | ST | BS | AS | YC        | 2min | RC | BC |
|         |      |      | -% (0 / 0)    | 0/0 | 0/0 | 0/0 | 0/0  | 0/0 | 0/0 | 0/0 | 0      | 0  | 0  | 0  | 0         | 0    | 0  | 0  |

A breakthrough (BT) is an additional information for goals that have been achieved from the backcourt. The number of these goals will not be included in the sum of the goals of a player.

| Goalkeepers |      | Shot (saves) |            |            |            |            |            |             |              |
|-------------|------|--------------|------------|------------|------------|------------|------------|-------------|--------------|
| No          | Name | Total        | 7m         | 6m         | 9m         | Wing       | PV         | Fast breaks | Breakthrough |
|             |      | -% (0 / 0)   | -% (0 / 0) | -% (0 / 0) | -% (0 / 0) | -% (0 / 0) | -% (0 / 0) | -% (0 / 0)  | -% (0 / 0)   |

| Team shots   | Goals | Saved | Missed | Post | Blocked | Total | Efficiency |
|--------------|-------|-------|--------|------|---------|-------|------------|
| 7m shots     | 0     | 0     | 0      | 0    | 0       | 0/0   | -%         |
| 6m shots     | 0     | 0     | 0      | 0    | 0       | 0/0   | NaN%       |
| 9m shots     | 0     | 0     | 0      | 0    | 0       | 0/0   | NaN%       |
| Wing shots   | 0     | 0     | 0      | 0    | 0       | 0/0   | NaN%       |
| Pivot        | 0     | 0     | 0      | 0    | 0       | 0/0   | NaN%       |
| Fast breaks  | 0     | 0     | 0      | 0    | 0       | 0/0   | NaN%       |
| Breakthrough | 0     | 0     | 0      | 0    | 0       | 0/0   | NaN%       |
|              | 0     | 0     | 0      | 0    | 0       | 0/0   | -%         |

## LEGEND

|      |                     |
|------|---------------------|
| PV   | Pivot shots         |
| FB   | All fast breaks     |
| BT   | Breakthrough        |
| TF   | Technical fault     |
| ST   | Steals              |
| BS   | Blocked shots       |
| AS   | Assist              |
| YC   | Yellow cards        |
| 2min | 2 Minute suspension |
| RC   | Red cards           |
| BC   | Blue cards          |

It is possible in individual cases, that differences between the sum of individual player statistics and team statistics occur. The reason is that due to the speed of a handball game at individual events our scouts can not assign the player data correctly.



Spiders Wels

ENDED

**32 : 32**

( 18 : 14 )

UHC Salzburg



| Players |      |      | Shots (goals) |     |     |     |      |     |     |     | Others |    |    |    | Penalties |      |    |    |
|---------|------|------|---------------|-----|-----|-----|------|-----|-----|-----|--------|----|----|----|-----------|------|----|----|
| No      | Name | Pos. | Total         | 7m  | 6m  | 9m  | Wing | PV  | FB  | BT* | TF     | ST | BS | AS | YC        | 2min | RC | BC |
|         |      |      | -% (0 / 0)    | 0/0 | 0/0 | 0/0 | 0/0  | 0/0 | 0/0 | 0/0 | 0      | 0  | 0  | 0  | 0         | 0    | 0  | 0  |

A breakthrough (BT) is an additional information for goals that have been achieved from the backcourt. The number of these goals will not be included in the sum of the goals of a player.

| Goalkeepers |      | Shot (saves) |            |            |            |            |            |             |              |
|-------------|------|--------------|------------|------------|------------|------------|------------|-------------|--------------|
| No          | Name | Total        | 7m         | 6m         | 9m         | Wing       | PV         | Fast breaks | Breakthrough |
|             |      | -% (0 / 0)   | -% (0 / 0) | -% (0 / 0) | -% (0 / 0) | -% (0 / 0) | -% (0 / 0) | -% (0 / 0)  | -% (0 / 0)   |

| Team shots   | Goals | Saved | Missed | Post | Blocked | Total | Efficiency |
|--------------|-------|-------|--------|------|---------|-------|------------|
| 7m shots     | 0     | 0     | 0      | 0    | 0       | 0/0   | -%         |
| 6m shots     | 0     | 0     | 0      | 0    | 0       | 0/0   | NaN%       |
| 9m shots     | 0     | 0     | 0      | 0    | 0       | 0/0   | NaN%       |
| Wing shots   | 0     | 0     | 0      | 0    | 0       | 0/0   | NaN%       |
| Pivot        | 0     | 0     | 0      | 0    | 0       | 0/0   | NaN%       |
| Fast breaks  | 0     | 0     | 0      | 0    | 0       | 0/0   | NaN%       |
| Breakthrough | 0     | 0     | 0      | 0    | 0       | 0/0   | NaN%       |
|              | 0     | 0     | 0      | 0    | 0       | 0/0   | -%         |

## LEGEND

|      |                     |
|------|---------------------|
| PV   | Pivot shots         |
| FB   | All fast breaks     |
| BT   | Breakthrough        |
| TF   | Technical fault     |
| ST   | Steals              |
| BS   | Blocked shots       |
| AS   | Assist              |
| YC   | Yellow cards        |
| 2min | 2 Minute suspension |
| RC   | Red cards           |
| BC   | Blue cards          |

It is possible in individual cases, that differences between the sum of individual player statistics and team statistics occur. The reason is that due to the speed of a handball game at individual events our scouts can not assign the player data correctly.